

FEDERAL SUPPLY CLASS
4730

REV.
C

AS4696™

RATIONALE

REVISE TABLES TO SEPERATE TITANIUM AND CORROSION RESISTANT STEEL PART NUMBERS.
REVISE NOTE /15/ AND /16/ TO INCLUDE CORROSION RESISTANT MATERIAL AND TO ADD CLARIFICATION ON USAGE.

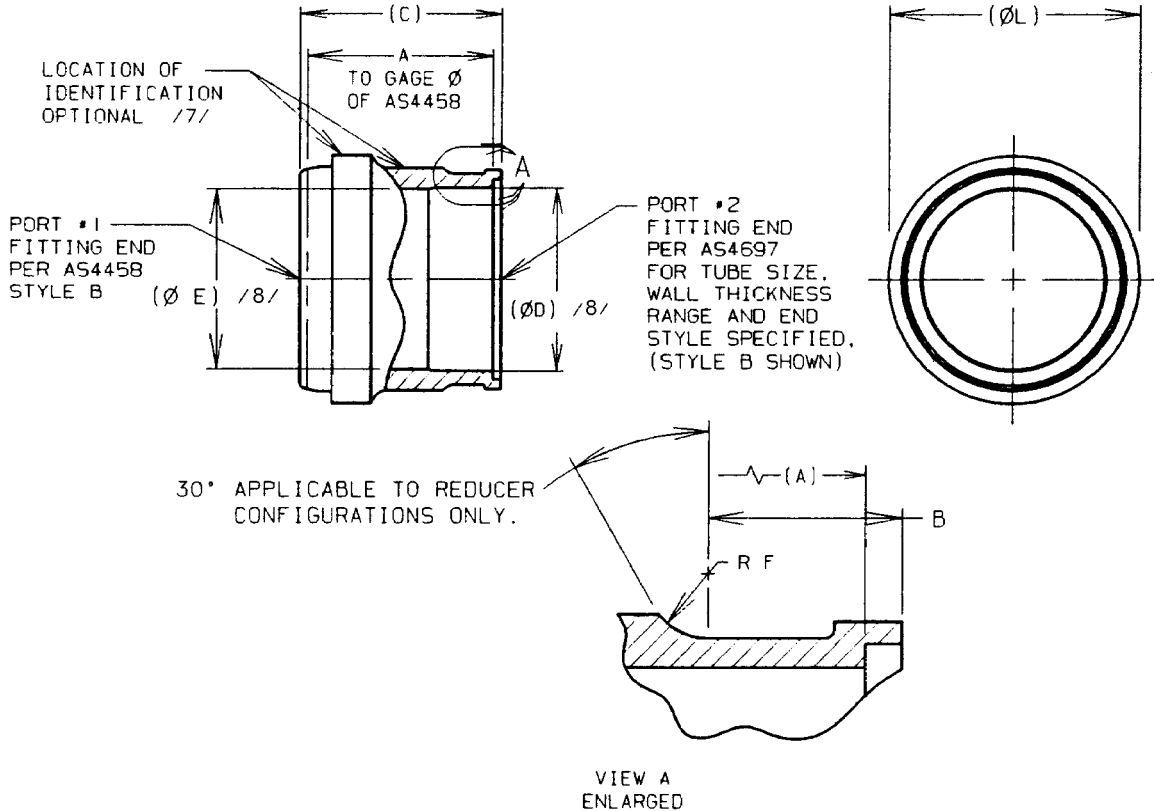
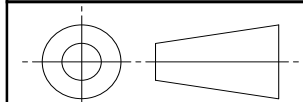


FIGURE 1 - SLEEVE, TUBE END

SAE values your input. To provide feedback on this Technical Report, please visit <http://standards.sae.org/AS4696C>

THIRD ANGLE PROJECTION



CUSTODIAN: G-3/G-3B

PROCUREMENT SPECIFICATION: AS1576 /4/



AEROSPACE STANDARD

(R) FITTING, SLEEVE, FLARELESS, NONREDUCER AND REDUCER, SHORT ACORN TO WELD TUBE END

AS4696™
SHEET 1 OF 5

REV.
C

SAE Technical Standards Board Rules provide that: "This report is published by SAE to advance the state of technical and engineering sciences. The use of this report is entirely voluntary, and its applicability and suitability for any particular use, including any patent infringement arising therefrom, is the sole responsibility of the user." SAE reviews each technical report at least every five years at which time it may be revised, reaffirmed, stabilized, or cancelled. SAE invites your written comments and suggestions.

ISSUED 1994-04 REAFFIRMED 2004-07 STABILIZED 2017-07 REVISED 2018-10

TABLE 1**TABLE 1A - DIMENSIONS AND WEIGHTS, TITANIUM FITTINGS ONLY**


BASIC NO. AS4696 /18/ SIZE AND TUBE WALL CODES	(RANGE OF NOMINAL TUBE WALLS FOR PORT #2) /18/	(NOMINAL TUBE SIZE) PORT #1	(NOMINAL TUBE SIZE) PORT #2	PORT #2 STYLE /8/	A	B ±.010	C
0404-018	.016-.018	.250	.250	B	.604	.100	.686
0505-022	.019-.022	.312	.312	B	.602	.100	.684
0606-022	.019-.022	.375	.375	B	.594	.100	.676
0808-028	.023-.028	.500	.500	B	.646	.135	.744
1010-032	.029-.032	.625	.625	B	.770	.165	.868
1212-043	.033-.043	.750	.750	B	.802	.185	.904
1616-055	.044-.055	1.000	1.000	A	.908	.250	1.016
2020-065	.056-.065	1.250	1.250	B	1.074	.250	1.186

TABLE 1A - DIMENSIONS AND WEIGHTS, TITANIUM FITTINGS ONLY (CONTINUED)

BASIC NO. AS4696 /18/ SIZE AND TUBE WALL CODES	D /8/	E /8/	F	L	LB/EA APPROX REF TI
0404-018	.208	.176	.050	.371	.00577
0505-022	.262	.232	.050	.434	.00786
0606-022	.325	.294	.050	.490	.00980
0808-028	.438	.412	.060	.670	.0173
1010-032	.555	.498	.060	.786	.0273
1212-043	.658	.648	.090	.960	.0330
1616-055	.884	-	.090	1.210	.0499
2020-065	1.114	1.090	.125	1.470	.0902

TABLE 2**TABLE 2A - DIMENSIONS AND WEIGHTS, CORROSION RESISTANT STEEL
AND TITANIUM FITTINGS /15/ /16/**

BASIC NO. AS4696 /18/ SIZE AND TUBE WALL CODES	(RANGE OF NOMINAL TUBE WALLS FOR PORT #2) /18/	(NOMINAL TUBE SIZE) PORT #1	(NOMINAL TUBE SIZE) PORT #2	PORT #2 STYLE /8/	A	B ±.010	C
0604-018	.016-.018	.375	.250	A	.594	.100	.676
0808-022	.019-.022	.500	.500	B	.646	.135	.743
1008-022	.019-.022	.625	.500	A	.740	.135	.838
1010-022	.019-.022	.625	.625	B	.770	.165	.868
1010-043	.033-.043	.625	.625	B	.770	.165	.868
1212-022	.019-.022	.750	.750	B	.802	.185	.904
1616-022	.019-.022	1.000	1.000	B	.908	.250	1.016

	AEROSPACE STANDARD		AS4696™ SHEET 2 OF 5	REV. C
	(R) FITTING, SLEEVE, FLARELESS, NONREDUCER AND REDUCER, SHORT ACORN TO WELD TUBE END			